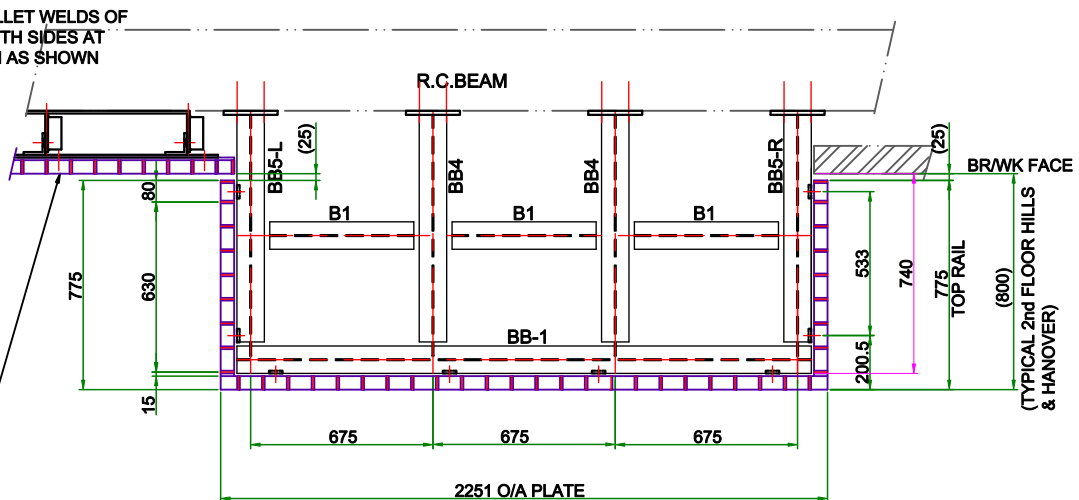


TYPICAL SECTION
(1 : 5)

FRONT BALUSTRADE WITH 10mm FASCIA PLATE ALL AS DETAIL FOR PROJECTING BALCONY



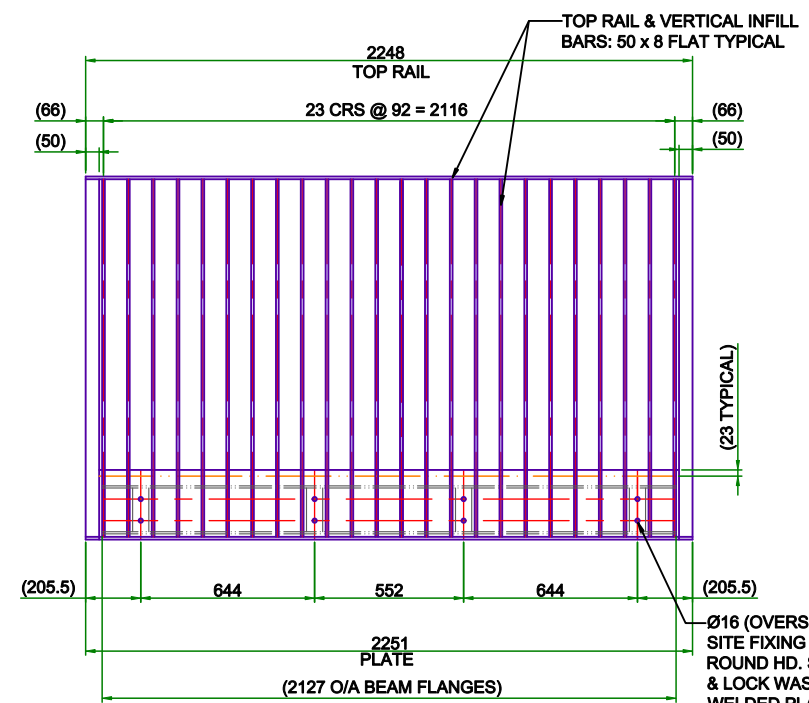
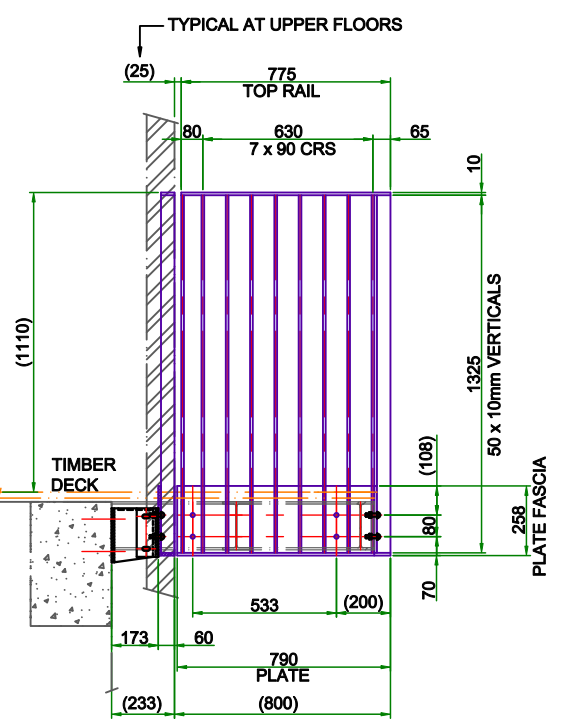
PLAN SECTION VIEW
(NOTE! EXACT WOULD BE 2248 AS PER ARCHITECT'S DETAILS)
NOTE! 2mm ADDED EACH SIDE GIVING 2131 BETWEEN SIDE PLATES FOR SITE FIX CLEARANCE TO O/BEAM DIM: 2127.

NOTES:

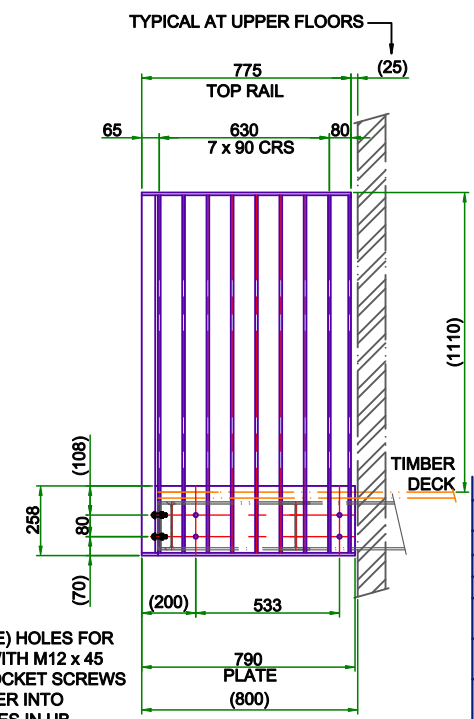
- 1) ALL WELDING CONTINUOUS & MIN 6 FILLET AND OF NEAT PROFILE U.N.O.
- 2) BALUSTRADES P.P. COATED TO ARCHITECT'S SPECIFICATION: RAL 9005 - 30% GLOSS (E.G. 'LOW SHEEN')
- 3) ALL VISIBLE BALUSTRADES FIXINGS MIN GR. 8.8 & B.Z.P. FINISH FOR POWDER COAT TOUCH UP

8 No - HILLS RESIDENTIAL
10 No - HANOVER

Process	Signature	Completion Date
Fabrication		
Welding		
Weld inspection		
Dimension check		
WPS Nos		



FRONT ELEVATION



PROJECTING BALUSTRADE 3rd & 4th FLOORS: R.C. BEAM - HILLS & HANOVER (differs at Agudas)

00	FABRICATION ISSUE	26.09.14
Rev	Amendments	MC
Dim.	Date MAY 14	Scale
Chkd.	Date	1 : 10
Client:	HILL PARTNERSHIP LTD	
Project:	BUCCLEUCH HOUSE CLAPTON COMMON	
METALCRAFT <i>Tottenham Limited</i>		
6 - 40 DURNFORD STREET SEVEN SISTERS ROAD LONDON N15 5NQ		
Tel: 020 8802 1715 Fax: 020 8802 1258		
E Mail: sales@makingmetalwork.com		
Drawing Title PROJECTING BALCONY BALUSTRADES - 3rd & 4th FLOORS		
Drawing No.	5196 - 115	Rev. 00